

Network Settings for Finishlynx

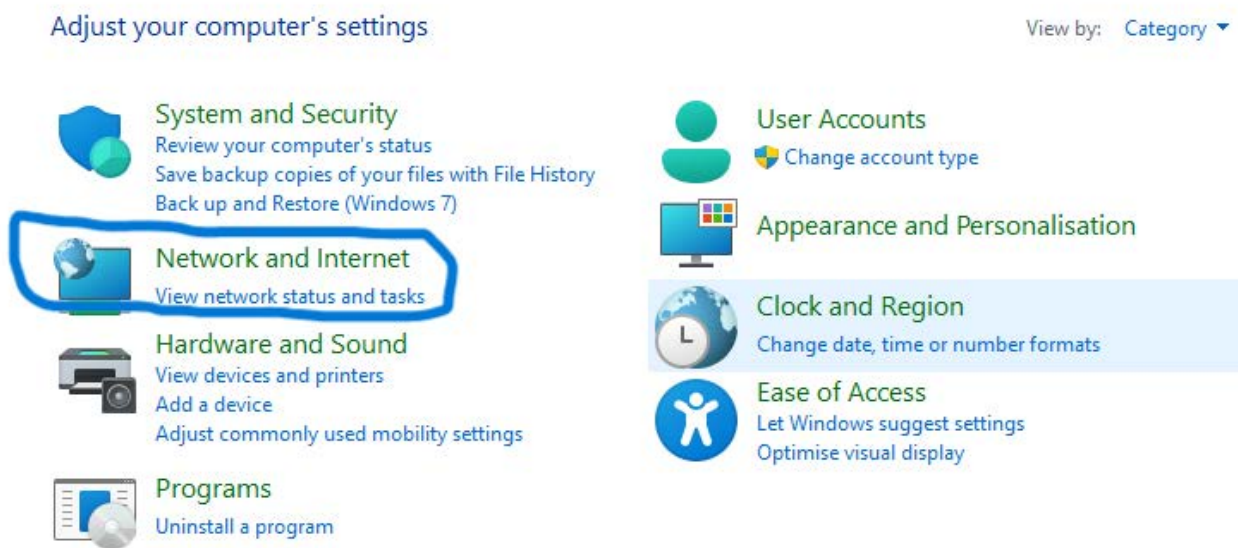
In order to setup a Finishlynx system ALL the computers in use or likely to be in use of your system have to be configured to communicate correctly with each other.

It is also a fallacy that you must turn OFF your Windows Defender or other system security software, when first installing your Finishlynx software leave your system protection turned on, right click the software and select the option to install as an "Administrator". This should apply all the correct settings to allow Finishlynx to run with your system protection enabled as normal, if it still doesn't work when you select it to run it may need adding within the security software, each software has it's own way to allow apps/ software to be added so i will not attempt to cover it here.

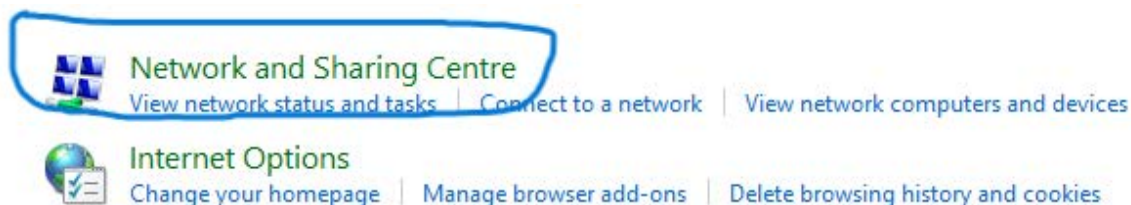
A normal Finishlynx setup will have a "Capture" and "Reader" computers and more than likely a "Data" computer as well.

Each of these computers needs to have a unique "IP Address" but a common "Subnet", the recommended IP Address of your Capture Computer is "192.168.0.5", with a subnet of "255.255.255.0", and all additional computers be kept 10 positions away on the IP Addresses, so "Reader" will be 192.168.0.15 and 255.255.255.0, and data if in use would be 192.168.0.25 and 255.255.255.0.

Step 1: To achieve this it is easiest to use "Control Panel", and select "Network and Internet" as shown.



Step 2: Then select "Network and Sharing Centre" as shown.



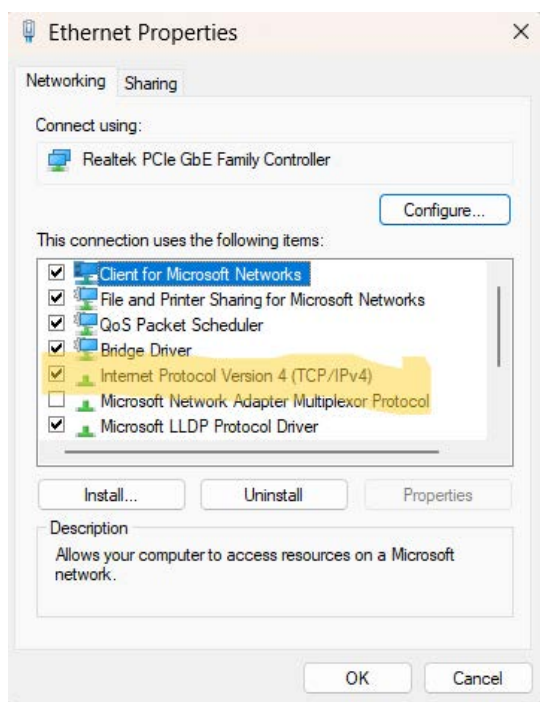
Step 3: In the popup select "Change Adapter Settings" as shown



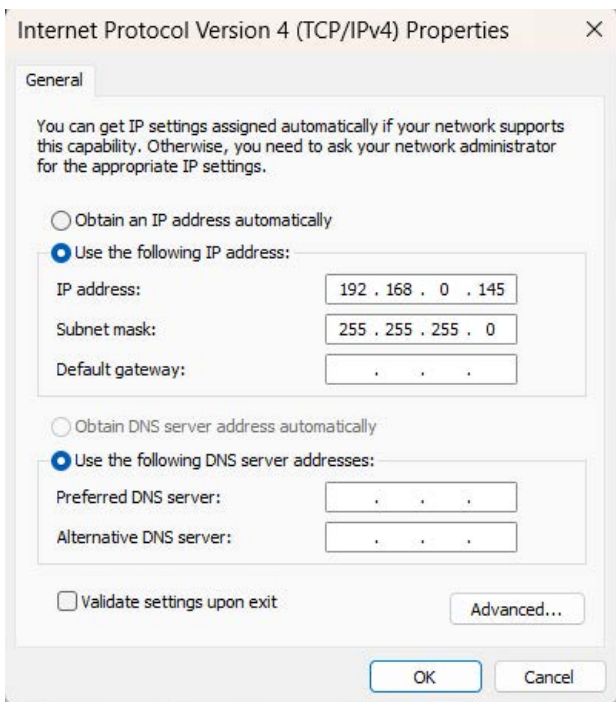
Step 4: At this point you should now have a screen that shows all the different adapters installed / available on your computer. Every computer / laptop will be different depending on what you have installed / connected mine is showing a connected "WiFi" adapter and an installed but not connected "Ethernet" adapter. It does not NEED to be connected to configure the adapter.



Step 5: Identify which adapter you need to configure then "RIGHT" click it and select "Properties", the following box will appear.



Step 6: In this box click to highlight "Internet Protocol Version 4(TCP/IPv4)" Then select "Properties" on the bottom right hand side. This will bring up the final stage to configure.

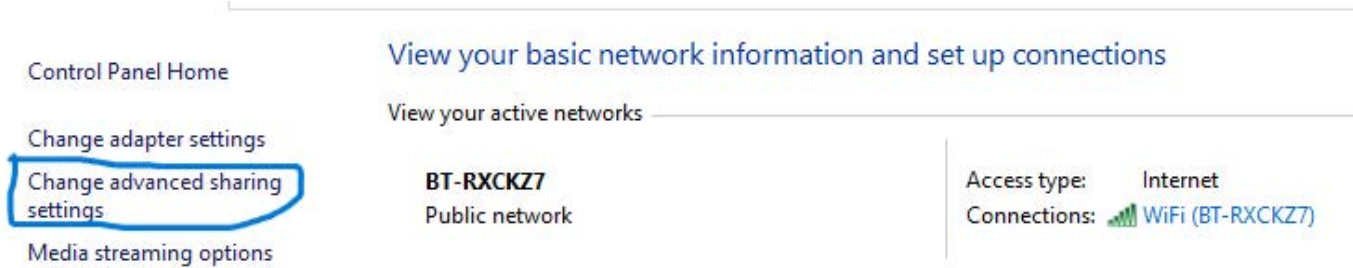


Step 7: The first time you do this on a laptop / computer it will more than likely all be blank with a "Black Dot" next to "Obtain an IP address automatically. Simply place the dot next to "Use the following IP address" on the IP address line type in the number you require, i have chosen 192.168.0.145 this allows me to move between systems without causing interference if they are configured to the standard Finishlynx settings. Next simply click in the first section next to Subnet mask, this should fill out all the sections as shown. Finally click "ok" and close out of all the screens, congratulations you have now configured this laptop / computer, move on to the next machine in your system.

All your laptops / computers should now be able to see each other on the Network, however to make the system work it is not good enough to simply see each Laptop / Computer THEY must all be able to communicate with each other.

This time it is slightly different to the previous process in that EVERY Laptop / computer MUST HAVE IDENTICAL SETTINGS.

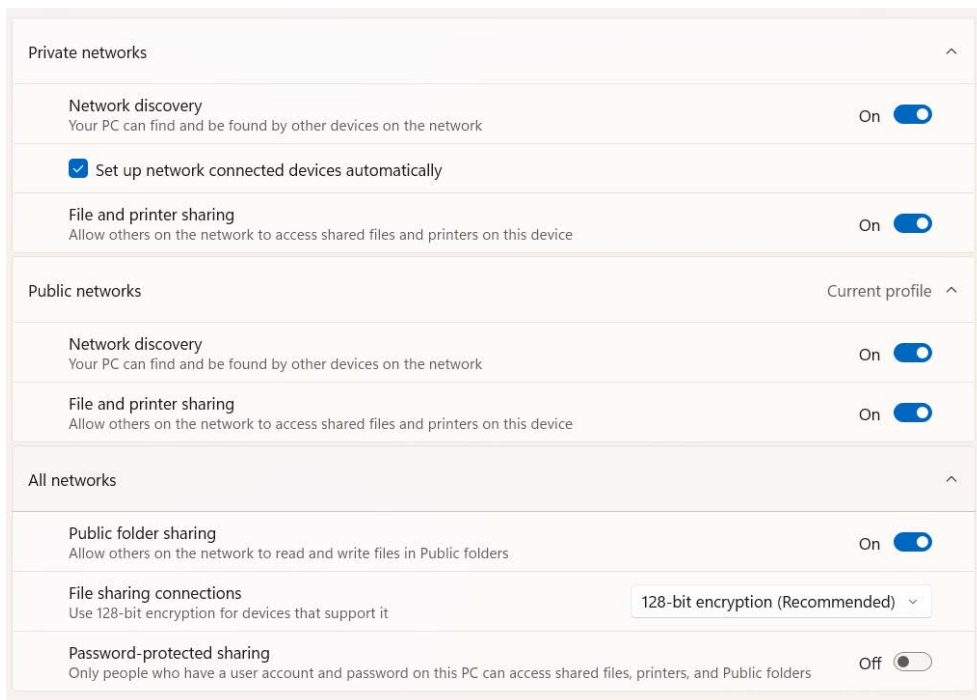
Again work on 1 machine at a time follow steps 1 and 2 as above, however at Step 3 we will select "Change Advanced Sharing Settings" as Shown.



Different versions of windows will display the following information in various layouts, however whichever variant you have ALL must have the various network types "Public, Private and All" set to ALLOW File and Printer Sharing, Allow discovery on a Network MUST be turned ON. Finally unless you are positive that only you and your computers will ever need to access this network Turn Password Protection OFF.

Unfortunately Windows systems seem to ignore this setting and will still occasionally ask you for YOUR details to connect to the network. Lets make this point very clear IT IS NOT ASKING FOR ANY DETAILS OF ANYTHING ON THE NETWORK EXCEPT the machine you are ON, so for example you are trying to connect to 3 laptops already networked and communicating so it wants the NEW MACHINES login details, either enter "user" and your password or your email address associated with Microsoft and your password.

By default these settings will allow you to access all the "Public Folder" items so it is typical of a PF setup to have the shared files stored in 1 machines "Public Documents"



Any further questions or explanations required either email tim1hood@hotmail.co.uk or 07979893938.